

# LIGHTHERM Application for State Court Singapore

*Main Contractor : Samsung C&T Corporation*

*Architect: CPG Consultant*

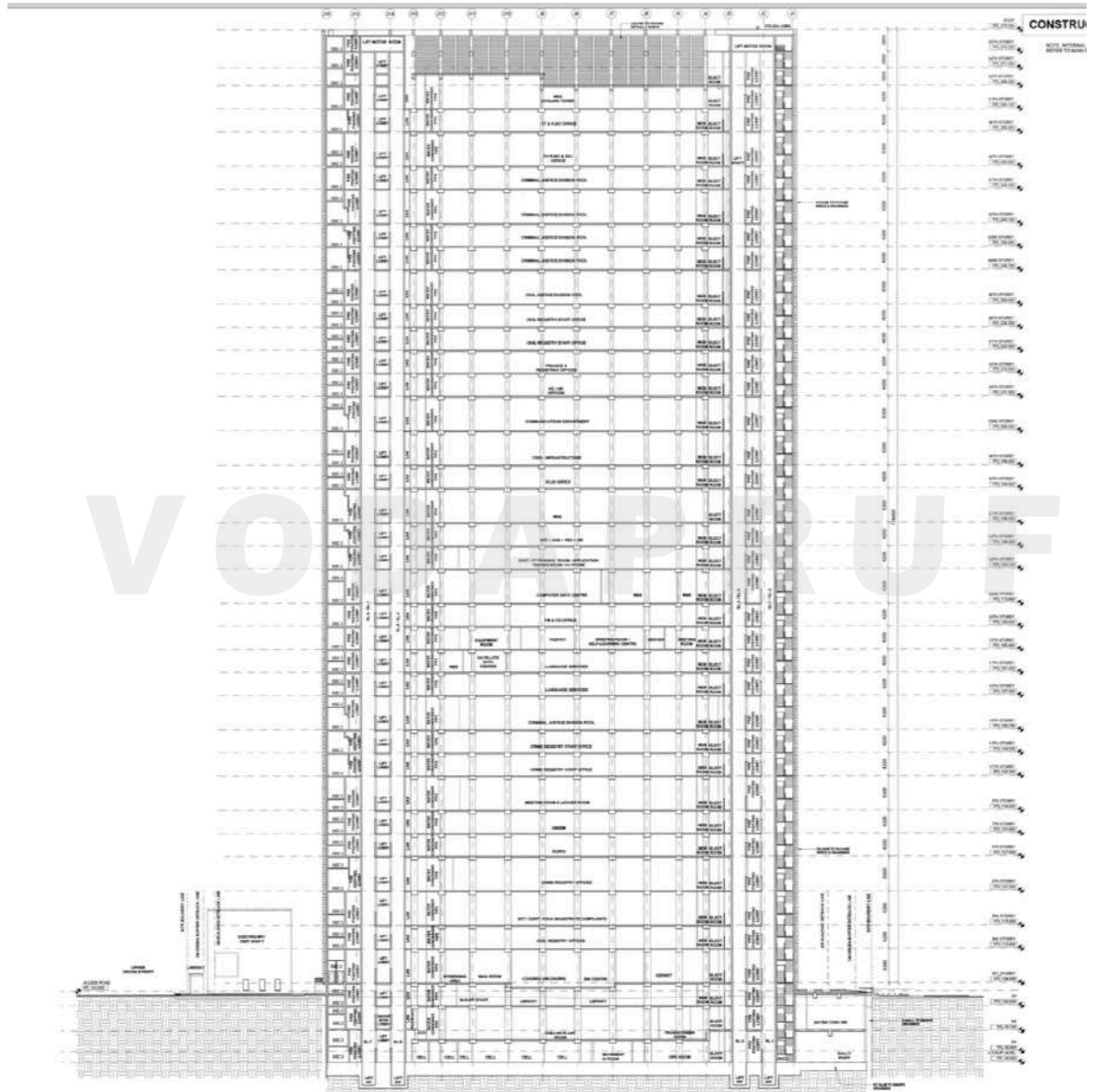
*Quantity : 3000m<sup>3</sup>*

*Usage: Lightweight Topping Up*



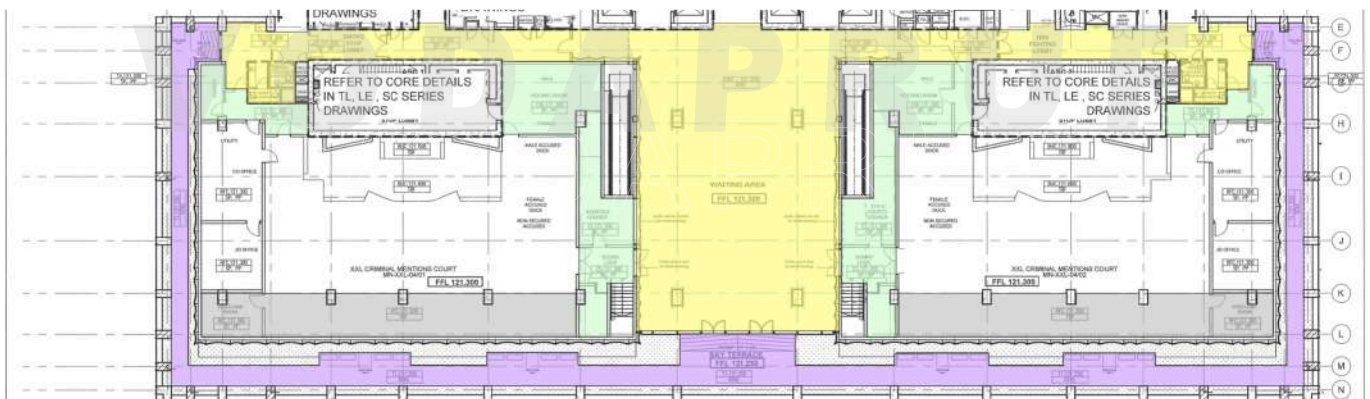
*Conceptual design. LIGHTHERM was specified by architect as lightweight topping screed to raise up floor level of each floor*

# LIGHTHERM Application for State Court Singapore



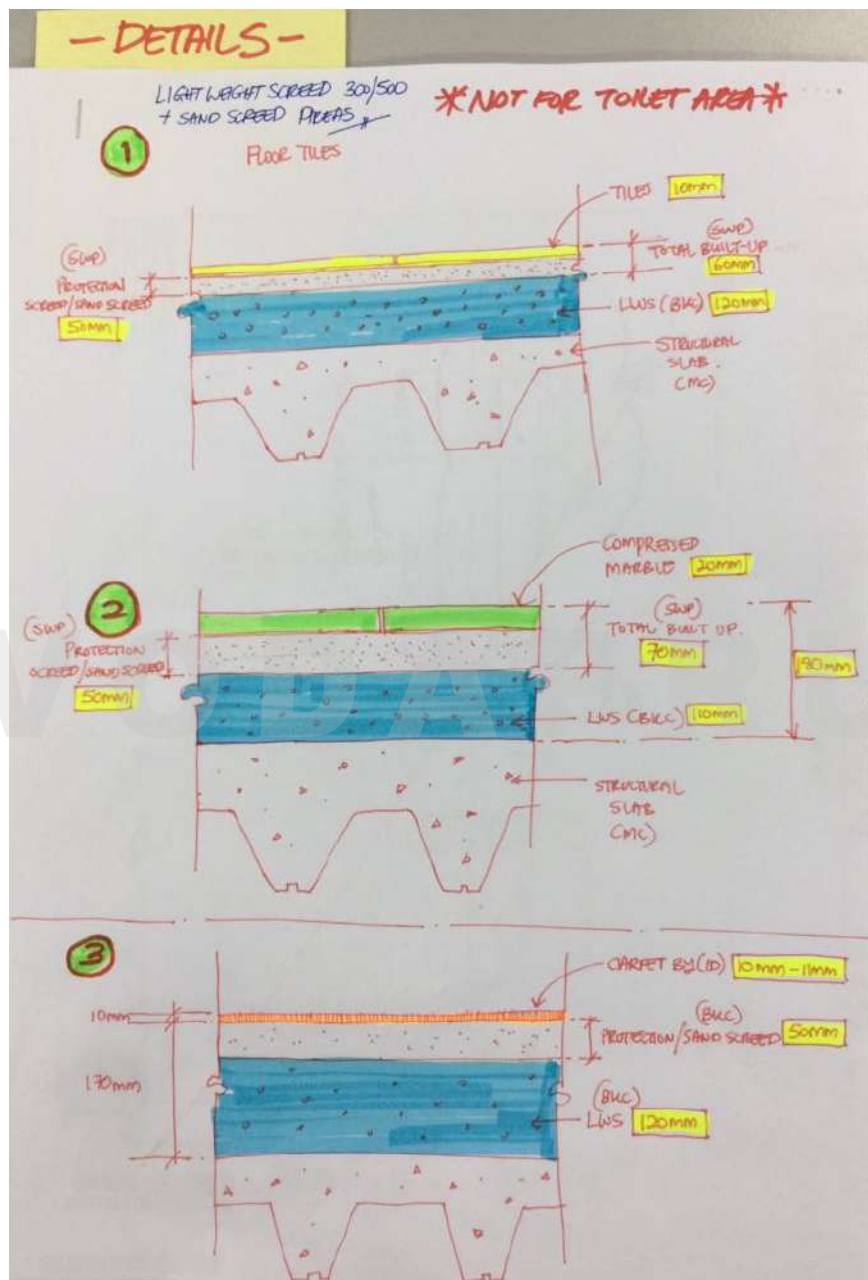
*LIGHTHERM applied at each floor*

# LIGHTHERM Application for State Court Singapore



*Plan drawing of areas of application*

# LIGHTHERM Application for State Court Singapore



Detail of built up



## LIGHTHERM Application for State Court Singapore



*LIGHTHERM pre-packed with cement in the factory as "LIGHTHERM DRYMIX"*



*LIGHTHERM pre-packed with cement in the factory as "LIGHTHERM DRYMIX"*

## LIGHTHERM Application for State Court Singapore



*LIGHTHERM at site with LIGHTHERM MACHINE*



*LIGHTHERM pre-packed with cement in the factory as "LIGHTHERM DRYMIX"*



## LIGHTHERM Application for State Court Singapore



*LIGHTHERM poured into mixer*

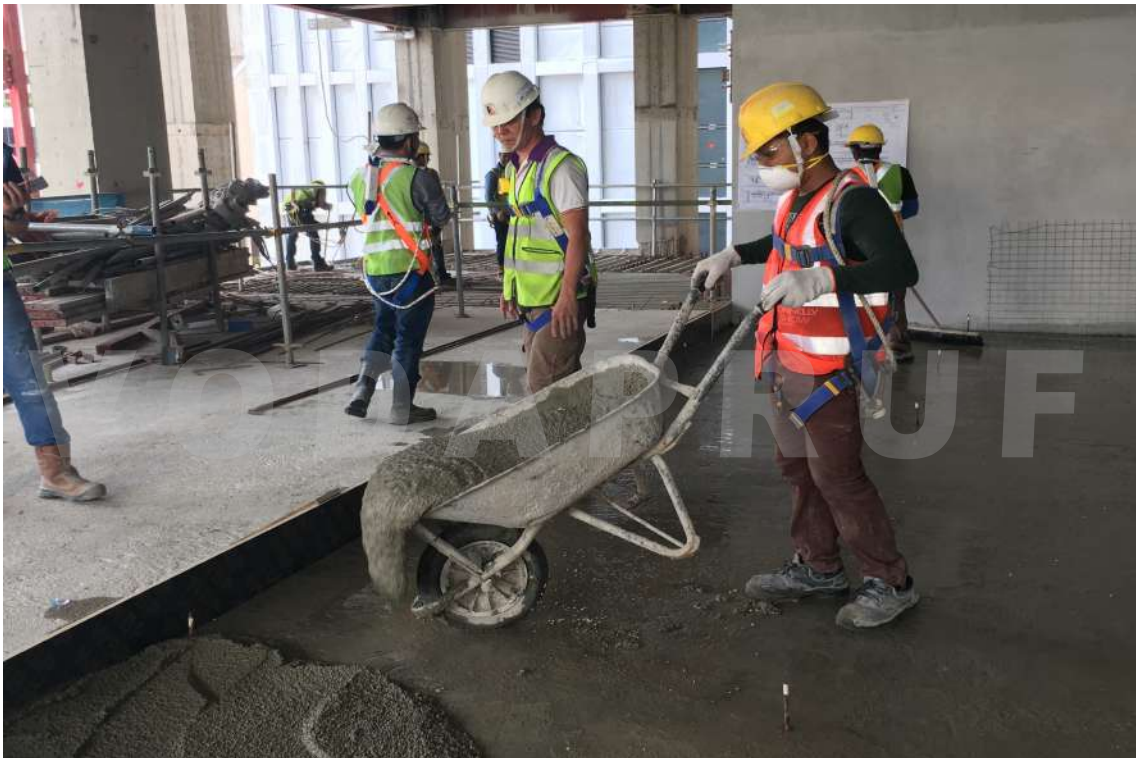


*Water added according to ratio stipulated and mix for 5 minutes . No additional material required.*

## LIGHTHERM Application for State Court Singapore



*LIGHTHERM ready for usage*



*LIGHTHERM application of floor as lightweight topping screed*



## LIGHTHERM Application for State Court Singapore



*proper trowelling of LIGHATHERM screed*